






LOCATED IN THE HEART OF ZIRAKPUR



- 
Close to 50 Acre Park : .25 kms
- 
Banks / Atm .5 kms
- 
Gurukul School 1 km
- 
Alchemist Hospital 1.5 kms
- 
Paras Mall 2 kms
- 
Bus Stand Panchkula 4 kms
- 
International Airport : 13 kms



SCO 404, Sector 20, Panchkula - 134107
 Website : www.fortunemultitech.com

Disclaimer : The offers given herein are only indicative & the Developer reserves the right to change all or any of them. This does not constitute an offer and/or contract of any type between the Developer & the Recipient, any Purchaser of the Unit/Apartment of the Project shall be governed solely by the terms & conditions of the Application/Agreement to Sale executed between the Purchaser & the Developer and no details/information mentioned shall in any way govern or be considered as the terms & conditions of such sale.

SAPPHIRE 99158-11988



Sector 5, Peermuchalla, Zirakpur

ZIRAKPUR'S MOST ICONIC LIFESTYLE

Property Managed by  **JLL**





3 BHK APARTMENTS

Experience the High of Living

You stand tall & proud & it is for you that we have created Victoria Heights - The Tallest Residential Complex in this part of the world. An iconic structure of unprecedented height, it promise to become a new landmark - not just in the city, but the entire region. And that's why, a home in Victoria Heights will be one that truly complements your accomplishments.



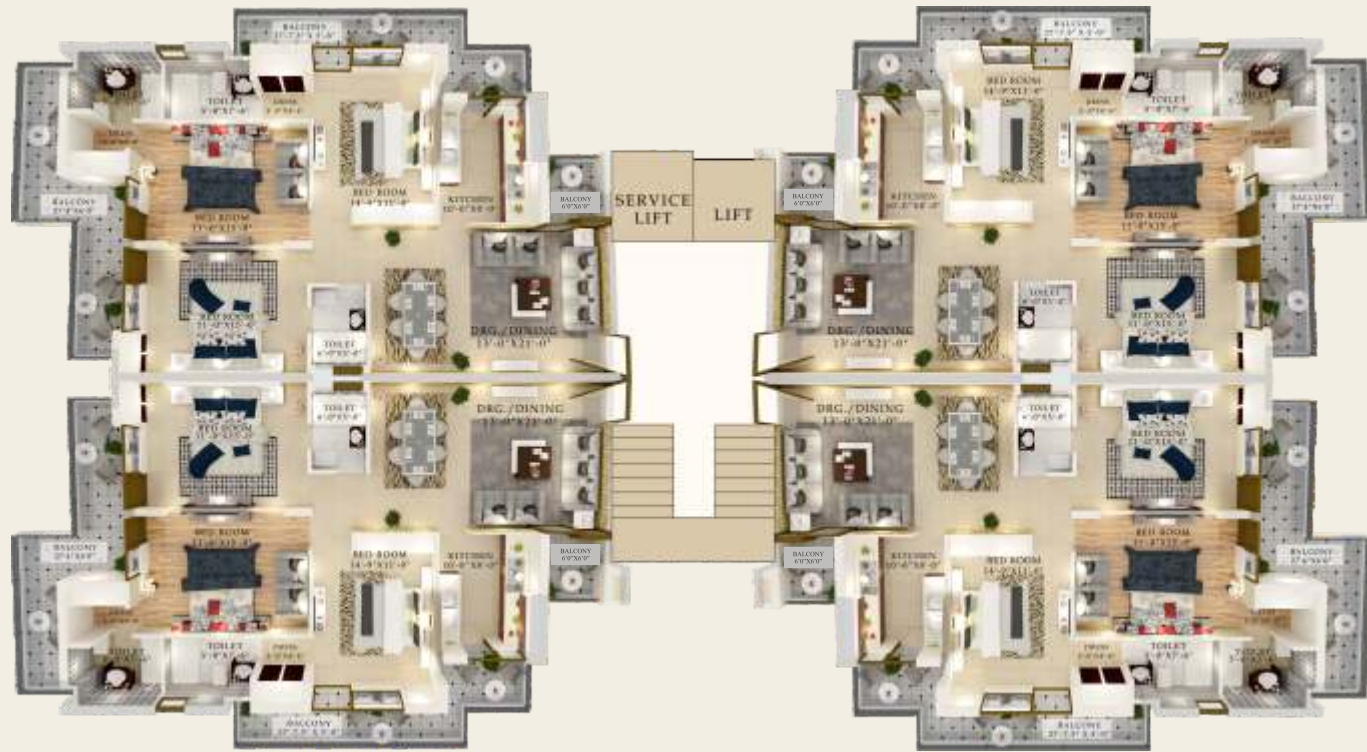
3 BHK UNIT PLAN



Carpet Area : 1007
Built Up Area : 1160.7 Sq. Ft.
Balcony Area : 402 Sq. Ft.
Common Area : 226.05 Sq. Ft.
Total Super Area : 1788.8 Sq. Ft.



CLUSTER PLAN



SITE LAYOUT PLAN



83'4" WIDE ROAD

Panchkula Forest Area



RELAX. RECHARGE & RE-DISCOVER YOURSELF

A home at 'Victoria Heights' means enough space to keep everyone in the family happy. You will get all the space you need to unwind, relax & expand your mind. You can rejuvenate & refresh yourself in more ways than one. With airy bedrooms, captivating views & lots of stretching space, you'll love the internationally acclaimed design & the wide open spaces surrounding your apartment.

UNIQUE FEATURES & AMENITIES

- 300+ Families Residing Happily
- Well connected to National Highway
- Pollution Free Surroundings
- 71% Open Area
- Independent Towers
- Round the Clock Water Supply
- 100% Power Backup
- Badminton Court
- Ample Parking Space
- State-of-the-art club house
- Stylish Swimming Pool
- All apartments are corner apartments
- Two Hi-Speed lifts in each block (1 Service Lift)
- Elegantly Designed 3 Bedroom Apartments
- Open Gym
- Party Hall
- Bedroom Privacy
- Spacious Balconies
- Airy Bedrooms
- Modish Washrooms
- Top end Modular Kitchen